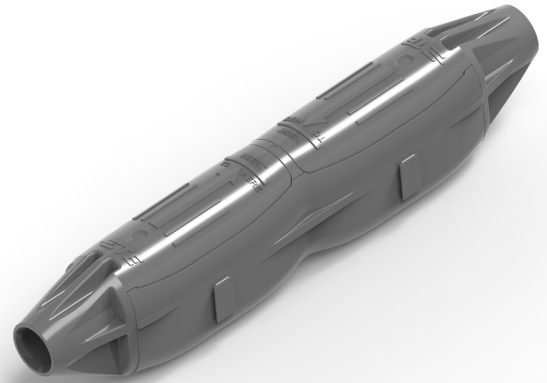


SOLARLOK 2.0 SPLICE

TE Connectivity's (TE) SOLARLOK 2.0 Splice is a tool-less field installable product using Insulation Displacement Contact (IDC) technology. Offering the installer an easy, quick and reliable connection from the PV Cable to the PV Panel. This meets the latest solar PV needs. SOLARLOK 2.0 Splice is available in both male and female versions and are gel-filled, which is a unique feature in the Solar market to ensure IPx8 water ingress protection.



Applications

- PV Installations
- PV Systems
- Inverters

Electrical

- UL 15 A and TÜV 25 A: 2.5 mm² / 14 AWG (at 85°C)
- UL 20 A and TÜV 30 A: 4.0 mm² / 12 AWG (at 85°C)
- UL 30 A and TÜV 35 A: 6.0 mm² / 10 AWG (at 85°C)

Mechanical

- 2.5 mm² / 14 AWG
- 4.0 mm² / 12 AWG
- 6.0 mm² / 10 AWG
- Applicable for solar cables with an outer diameter of 5.5mm up to 7.2mm

Specifications

- Product Specification: [108-133104](#)
- Application Specification: [114-133104](#)
- 1500V - UL6703
- 1500V - IEC62852 pending
- CE certification pending

Materials - Cover and Base Housing

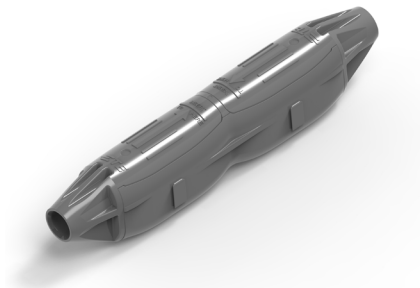
- PPE & PS
- Tinned copper alloy
- Stainless steel

Benefits

- Avoid cable stripping by simply plugging in the cable and snapping on the button to terminate
- Provides Insulation Displacement Contact (IDC) technology
- Reduce total applied cost of value chain
- Accelerate the termination process with loose parts to handle and no customs tools required
- Reduce 80% installation time in comparison to market standard PV DC connectors (with multi-components and crimp-contacts)
- Unique gel-filling ensure IPx8 water ingress protection (1m/24hours)
- Equipped with dove tail feature to stack them side-by-side

Product Selection Information

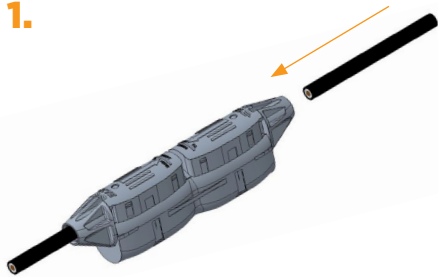
Description	Part Number
SOLARLOK 2.0 Splice	2336077-1



[2336077-1](#)

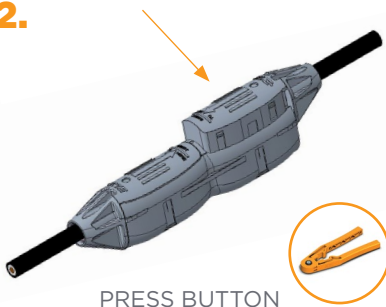
EASY TO USE IN 3 STEPS

1.



INSERT CABLE

2.



PRESS BUTTON
(terminate cable)

3.



READY
(fully closed)

Note: for detailed instructions, check Application Specification 114-133104

RECOMMENDED TOOLS



SOLARLOK hand tool
[2341979-1](#)

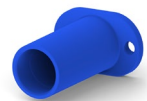


SOLARLOK delatch tool
[2342988-1](#)

ACCESSORIES



Dust Cap for
Male Housing
[2232228-1](#)



Dust Cap for
Female Housing
[2232227-1](#)

te.com

© 2020 TE Connectivity. All Rights Reserved. SOLARLOK, TE, TE Connectivity, and the TE connectivity (logo) are trademarks of the TE Connectivity. Other logos, product and Company names mentioned herein may be trademarks of their respective owners.

While TE has made every reasonable effort to ensure the accuracy of the information in this brochure, TE does not guarantee that it is error-free, nor does TE make any other representation, warranty or guarantee that the information is accurate, correct, reliable or current. TE reserves the right to make any adjustments to the information contained herein at any time without notice. TE expressly disclaims all implied warranties regarding the information contained herein, including, but not limited to, any implied warranties of merchantability or fitness for a particular purpose. The dimensions in this catalog are for reference purposes only and are subject to change without notice. Specifications are subject to change without notice. Consult TE for the latest dimensions and design specifications.

4-1773982-1 JN 03/2020

USA: +1 (800) 522-6752
 Canada: +1 (905) 475-6222
 Mexico: +52 (0) 55-1106-0800
 Latin/S. America: +54 (0) 11-4733-2200
 Germany: +49 (0) 6251-133-1999
 UK: +44 (0) 800-267666
 France: +33 (0) 1-3420-8686
 The Netherlands: +31 (0) 73-6246-999
 China: +86 (0) 400-820-6015